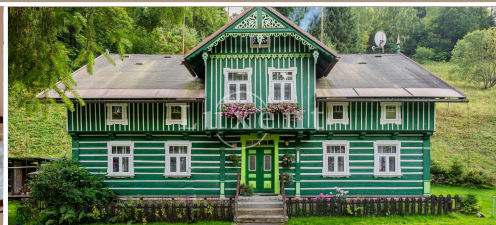




## Sale of a timbered house, 300 sqm, land of 3166 sqm, Krkonoše - Velká Úpa



🏠 300 m<sup>2</sup> 📖 Pec pod Sněžkou, Velká Úpa, Trutnov, Hradec Králové Region 💰 12 990 000 CZK per property



WITH THIS PROPERTY, YOU'LL BE ASSISTED BY

**Tereza Mikesková**  
ASSISTANT

info@luxent.cz  
+420 731 300 400

Order number	<b>N6049</b>	Price	<b>12 990 000 CZK per property</b>
Address	<b>Pec pod Sněžkou, Velká Úpa, Trutnov, Hradec Králové Region</b>	Type	<b>Houses</b>
Category	<b>Cottage</b>	Usable area	<b>300 m<sup>2</sup></b>
Number of rooms	<b>5 and more rooms</b>	Land area	<b>3 166 m<sup>2</sup></b>
Low energy	<b>No</b>	Number of floors	<b>2</b>
Parking	<b>Yes</b>	Garage	<b>1</b>
Year of construction	<b>1910</b>		

## About real estate

We offer exclusively for sale a timbered house in Velká Úpa, near Pec pod Sněžkou. The building from the end of the 19th century is used by the current owners for recreation. The whole house has been reconstructed recently.

On the ground floor there is a living room, kitchen, bedroom, another room, bathroom with shower, space for washing machine and toilet, central corridor, ski room, two separate toilets, cellar, workshop and separate garage.

Upstairs there are four bedrooms, three bathrooms with toilet, a storage room and a spacious room formerly used as a carpentry workshop.

Renovations included new windows, gable siding and insulation, electrical wiring, roof (Bon shingles) truss repairs, sewer and water lines, new paint, gable tops and insulation, chimneys, antenna wiring, interlocking tiles, interior window trim and much more. Electrical, water and sewer connections. Central heating with electric boiler (can be controlled via app) and solid fuel boiler, there are also solid fuel stoves in every room on the ground floor.

Velká Úpa offers all civic amenities, located near Pec pod Sněžkou. The location with beautiful mountain scenery invites to hiking tours such as Sněžka, Černá hora, Kraví hora or Lysečinský ridge. The area is criss-crossed with cycling trails and opportunities for summer fun, including the treetop trail and rope centres. In winter, there are plenty of opportunities for winter sports in the area, with the ski resorts of Pec pod Sněžkou, Jánské lázně or the individual ski slopes around Horní Maršov nearby, not to mention cross-country skiing trails.