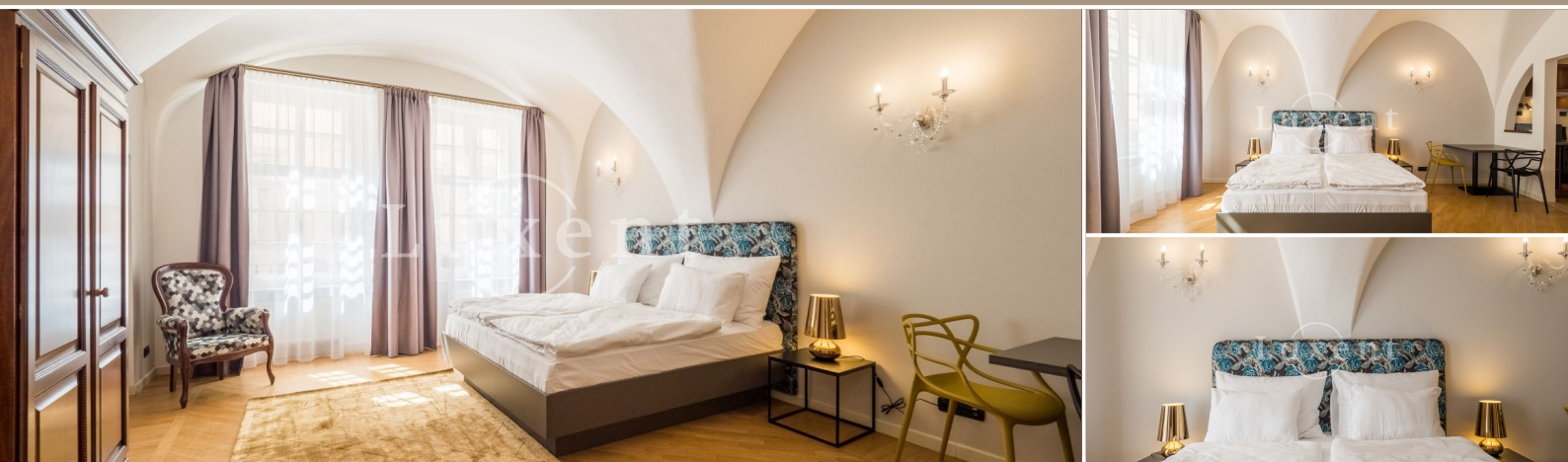




Rent of an apartment 1+kt, 36 sqm, Prague 1 - Old Town



36 m² Řetězová, Praha 1 - Staré Město Leased



WITH THIS PROPERTY, YOU'LL BE ASSISTED BY

Mgr. Adam Kvasnička

LEASE SPECIALIST

adam.kvasnicka@luxent.cz

+420 730 511 611

Order number	N5506	Price	Leased
Address	Řetězová, Praha 1 - Staré Město	Type	Apartments
Disposition	1 + kitchenette	Usable area	36 m²
Offer status	Leased	Floor area	36 m²
Low energy	No	Energy performance of the building	G - Extremely uneconomical
Floor	1st floor	Device	Yes
Parking	Yes	Lift	Yes

About real estate

We offer for rent a modern studio 1+kt of 36 sqm. The air-conditioned apartment is located on the 1st floor of a house in the Old Town, a few steps from Old Town Square, Charles Bridge or Pragues Klementinum.

The layout includes bedroom with a double bed and kitchenette, bathroom and a toilet. The kitchen is fully equipped with all appliances. The apartment has quality tiles; there is satellite TV, internet.

Due to its location, this apartment is ideal for people who like to stay in the heart of the metropolis. All civic amenities are within walking distance – shops (SM Quadrio 500 m), services, schools, restaurants and cafes. Great transport accessibility, metro station Staroměstská about 5 minutes walk.

Due to its size, we recommend the apartment for two people.

Available immediately.

Energy performance class G is listed only temporarily to meet legal requirements, the certificate is submitted for elaboration.