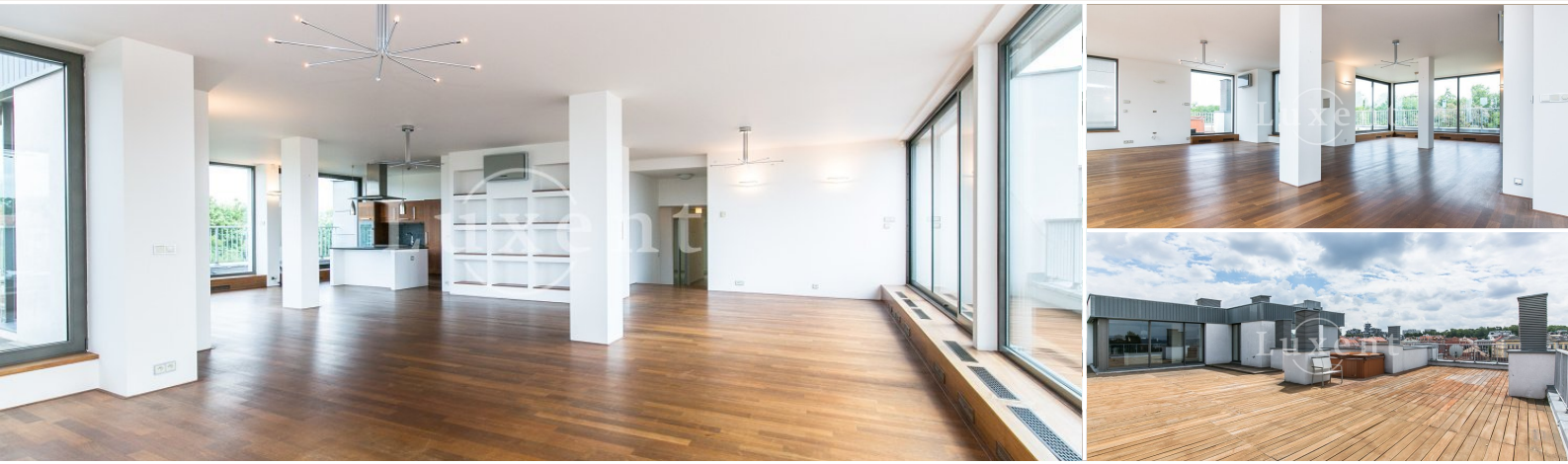




## Rent of a duplex 5+kt/T, 440 sqm, Prague 3 - Žižkov



🏠 443 m<sup>2</sup> 📖 Kališnická, Praha 3 - Žižkov 📄 Leased



WITH THIS PROPERTY, YOU'LL BE ASSISTED BY

**Ing. Zdeněk Jemelík**  
SENIOR SALES SPECIALIST

zdenek.jemelik@luxent.cz  
+420 720 310 300

Order number	<b>N4230</b>	Price	<b>Leased</b>
Address	<b>Kališnická, Praha 3 - Žižkov</b>	Type	<b>Apartments</b>
Disposition	<b>5 + kitchenette</b>	Usable area	<b>443 m<sup>2</sup></b>
Offer status	<b>Leased</b>	Floor area	<b>250 m<sup>2</sup></b>
Low energy	<b>No</b>	Energy performance of the building	<b>G - Extremely uneconomical</b>
Floor	<b>8th floor</b>	Device	<b>No</b>
Parking	<b>2</b>	Garage	<b>Yes</b>
Terrace	<b>190 m<sup>2</sup></b>	Cellar	<b>Yes</b>
Lift	<b>Yes</b>		

## About real estate

We offer to rent an exclusive, unfurnished duplex apartment in new building with nonstop reception. Apartment with a living space of 250 sqm (4 bedrooms, 2 bathrooms) also has a large terrace (190 sqm) with beautiful views of the metropolis and the Vrch Vítkov park, which closely adjoins the residential building. The building has underground garages (two parking slots reserved for an advertised apartment).

Shared fitness, a sauna and a rest room are also available in the common areas of the house. The location is well connected by car and public transport - 100 m from the house there is a bus stop with a direct connection to the metro Florenc and Flora adjacent to OC Atrium Flora.

The Energy Class G is only listed temporarily to meet legal requirements, the license is required to be drawn up.