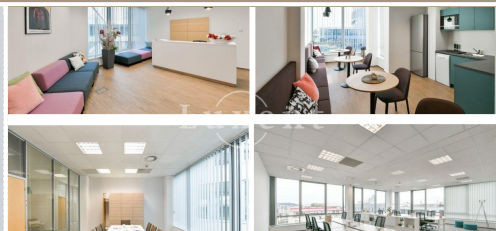




Rent of an office space, 138 sqm, Prague 4



138 m² | Lomnického, Praha 4 - Nusle | 390 CZK per m2 / month



WITH THIS PROPERTY, YOU'LL BE ASSISTED BY

Anna-Mariia Liubun
ASSISTANT

annamariia.liubun@luxent.cz
+420 770 189 189

Order number	N6394	Price	390 CZK per m2 / month + services 181,- CZK/sqm
Address	Lomnického, Praha 4 - Nusle	Type	Offices
Usable area	138 m²	Parking	1
Low energy	No	Energy performance of the building	G - Extremely uneconomical
Date to move in	22. 2. 2023		

About real estate

We offer for rent modern office space with a total size of 137.6 sqm in a unique location in Prague 4, right next to the metro station C - Pražského povstání. The offices are located on the 7th floor. The premises are equipped with air conditioning units, modern fully automated heating system, lighting, internet outlets, security system, cameras. The building has a chip elevator, 24/7 reception, security.

Parking in the garage for an additional fee of EUR 120/month per 1 parking space.

The location is ideal due to the availability of public transport, amenities. In the vicinity and close proximity there are cafes, restaurants, shops.

We recommend a tour.