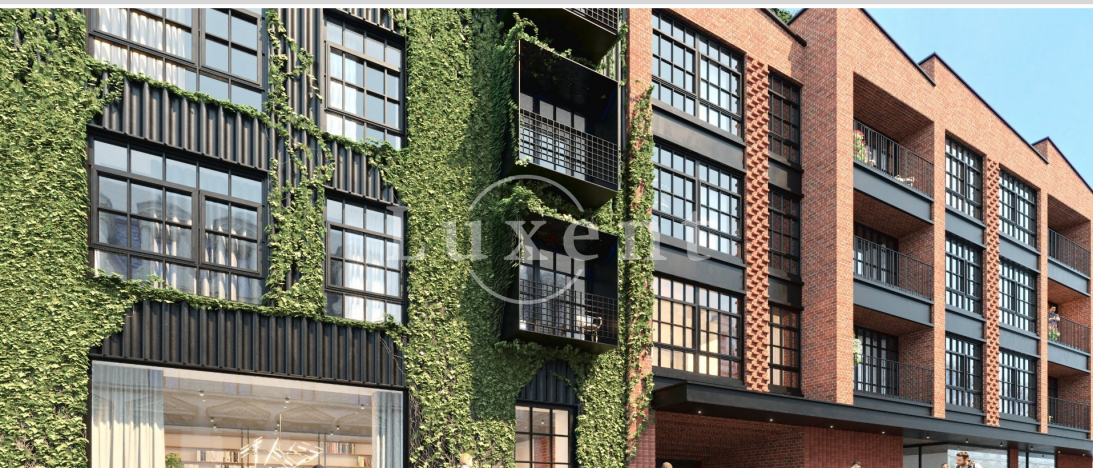




Sale of an apartment 2+kt, 66,7 sqm, in the project Garden Lofts, Prague 5 - Pechlátova str.



BY 18 | 2FN

podlaží: 4. NP
užitná plocha: 66,7 m²
podlahová plocha: 73,9 m²
m² vč. balkonů a teras

4.01	průběžná chodba	7,7 m ²
4.02	WC	2,2 m ²
4.03	kuchyně/WC	5,3 m ²
4.04	ložnice	29,3 m ²
4.05	obývací prostor	22,8 m ²
4.06	terasa	22,8 m ²
4.07	šatna	22,8 m ²
podlahová plocha včetně šatny		66,7 m ²
užitná plocha včetně		66,7 m ²

67 m² Pechlátova, Praha 5 Sold



WITH THIS PROPERTY, YOU'LL BE ASSISTED BY

Ing. Zdeněk Jemelík
SENIOR SALES SPECIALIST

zdenek.jemelik@luxent.cz
+420 720 310 300

Order number	GL-18	Price	Sold
Address	Pechlátova, Praha 5	Type	Apartments
Disposition	2 + kitchenette	Usable area	67 m²
Offer status	Sold	Floor area	67 m²
Energy performance of the building	B - Very economical	Floor	3rd floor
Parking	Yes	Cellar	Yes
Lift	Yes		

About real estate

We offer for sale designer apartment 2+t with living area of 66,74 sqm in unique development project Garden Lofts in Pechlátova street, Prague 5.

The apartment is situated on 3rd floor. The interior includes a hallway, a spacious living room with a kitchenette, a bedroom, a bathroom with a shower and a separate toilet. The apartment has a parking space in the underground garage and a brick cellar.

The order	Layout	Floor	Usable area	Living area	Terrace / Balcony / Loggia	Garden	Price
GL-K	Bussiness Units	ground floor	100 m ²	100 m ²	No / No / No	No	SOLD
GL-01	2 + kitchenette	1st floor	55 m ²	51 m ²	No / 4 m ² / No	No	SOLD
GL-02	5 + kitchenette	1st floor	191 m ²	112 m ²	Yes / 3 m ² / No	Yes (44 m ²)	SOLD
GL-03	3 + kitchenette	1st floor	159 m ²	63 m ²	Yes / No / No	Yes (64 m ²)	SOLD
GL-04	2 + kitchenette	1st floor	100 m ²	39 m ²	Yes / No / No	Yes (40 m ²)	SOLD
GL-05	2 + kitchenette	1st floor	110 m ²	39 m ²	Yes / No / No	Yes (40 m ²)	SOLD
GL-06	4 + kitchenette	1st floor	204 m ²	113 m ²	Yes / 4 m ² / No	Yes (54 m ²)	SOLD
GL-07	1 + kitchenette	1st floor	50 m ²	50 m ²	No / No / No	No	SOLD
GL-08	2 + kitchenette	2nd floor	55 m ²	51 m ²	No / 4 m ² / No	No	SOLD
GL-09	4 + kitchenette	2nd floor	117 m ²	106 m ²	No / 3 m ² / 8 m ²	No	SOLD
GL-10	2 + kitchenette	2nd floor	66 m ²	58 m ²	No / No / 8 m ²	No	SOLD
GL-11	1 + kitchenette	2nd floor	39 m ²	39 m ²	No / No / No	No	SOLD
GL-12	1 + kitchenette	2nd floor	40 m ²	40 m ²	No / No / No	No	SOLD
GL-13	3 + kitchenette	2nd floor	119 m ²	109 m ²	No / 4 m ² / 6 m ²	No	SOLD
GL-14	1 + kitchenette	2nd floor	49 m ²	49 m ²	No / No / No	No	SOLD
GL-15	2 + kitchenette	3rd floor	55 m ²	51 m ²	No / 4 m ² / No	No	SOLD
GL-16	4 + kitchenette	3rd floor	116 m ²	106 m ²	No / 2 m ² / 8 m ²	No	SOLD
GL-17	2 + kitchenette	3rd floor	66 m ²	58 m ²	No / No / 8 m ²	No	SOLD
GL-18	2 + kitchenette	3rd floor	67 m ²	67 m ²	No / No / No	No	SOLD
GL-19	3 + kitchenette	3rd floor	111 m ²	101 m ²	No / 4 m ² / 6 m ²	No	SOLD
GL-20	2 + kitchenette	3rd floor	53 m ²	53 m ²	No / No / No	No	SOLD
GL-21	3 + kitchenette	4th floor	165 m ²	112 m ²	53 m ² / No / No	No	SOLD
GL-22	4 + kitchenette	4th floor	191 m ²	132 m ²	59 m ² / No / No	No	SOLD
GL-K1	Bussiness Units	ground floor	99 m ²	99 m ²	No / No / No	No	SOLD
N7079	Offices	ground floor	100 m ²	100 m ²	No / No / No	No	LEASED